



**When we CARE
about older adults,
we all benefit**

Ensuring Equitable Service Delivery:

**A Primer for Mathphobes and Data
Nerds, Too!**

**Tammy Mermelstein, JD, MSW, Executive Director
Collaboratory for Aging Resources and Education
Aging in Texas Conference 2022**



The Obligatory

Participants will:

- Learn about how to quantify higher at-risk communities
- Use hypothetical data to explore how they can measure whether they are providing services equitably or create a plan to address growth opportunities
- Leave with ideas about how to increase equitable service delivery

There are no disclosures for this presentation.



When we CARE
about older adults,
we all benefit



**When we CARE
about older adults,
we all benefit**





**When we CARE
about older adults,
we all benefit**



**93% of Americans report
some level of math anxiety**

Source: Beilock, S. (Oct. 23, 2019). *Americans need to get over their fear of math*. Harvard Business Review, <https://hbr.org/2019/10/americans-need-to-get-over-their-fear-of-math>.



Why is data important in our field?

Powered by  Poll Everywhere

Start the presentation to see live content. For screen share software, share the entire screen. Get help at pollev.com/app

Data is Critically Important

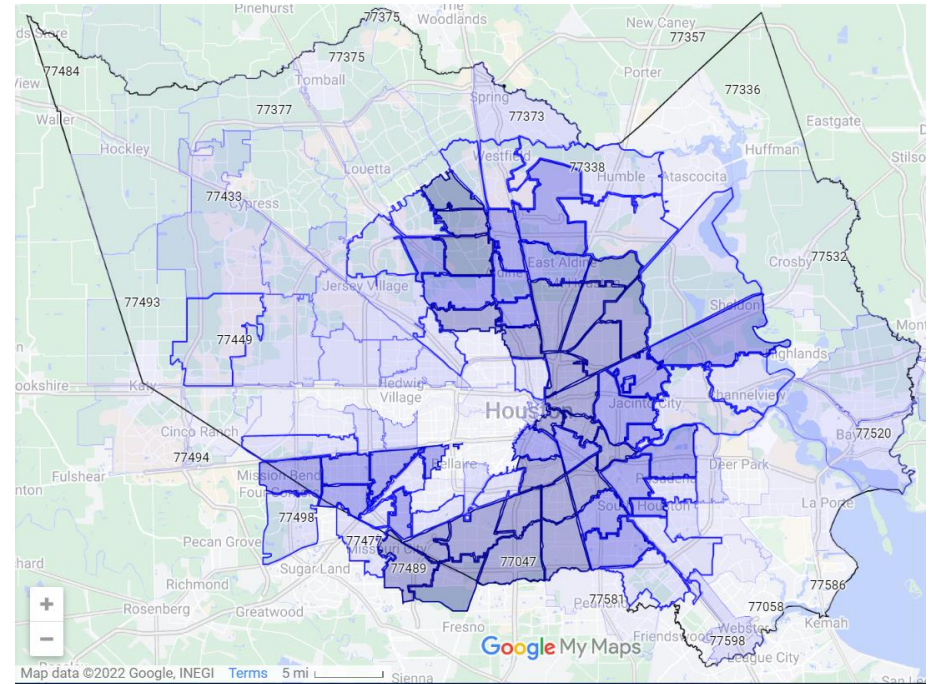
- Funding
- Central to our roles as storytellers and advocates
- Manage scarce resources
- Numbers/visualization are powerful



**When we CARE
about older adults,
we all benefit**

A Brief Example

- The majority of Harris County's population belongs to a racial or ethnic minority.
- 1 out of every 2 older adults in Harris County is from a racial or ethnic minority group.



When we CARE
about older adults,
we all benefit

Today's Central Question

How do we work to
ensure equitable
service delivery when
we have limited
resources?



**When we CARE
about older adults,
we all benefit**



What does equitable service delivery mean to you?

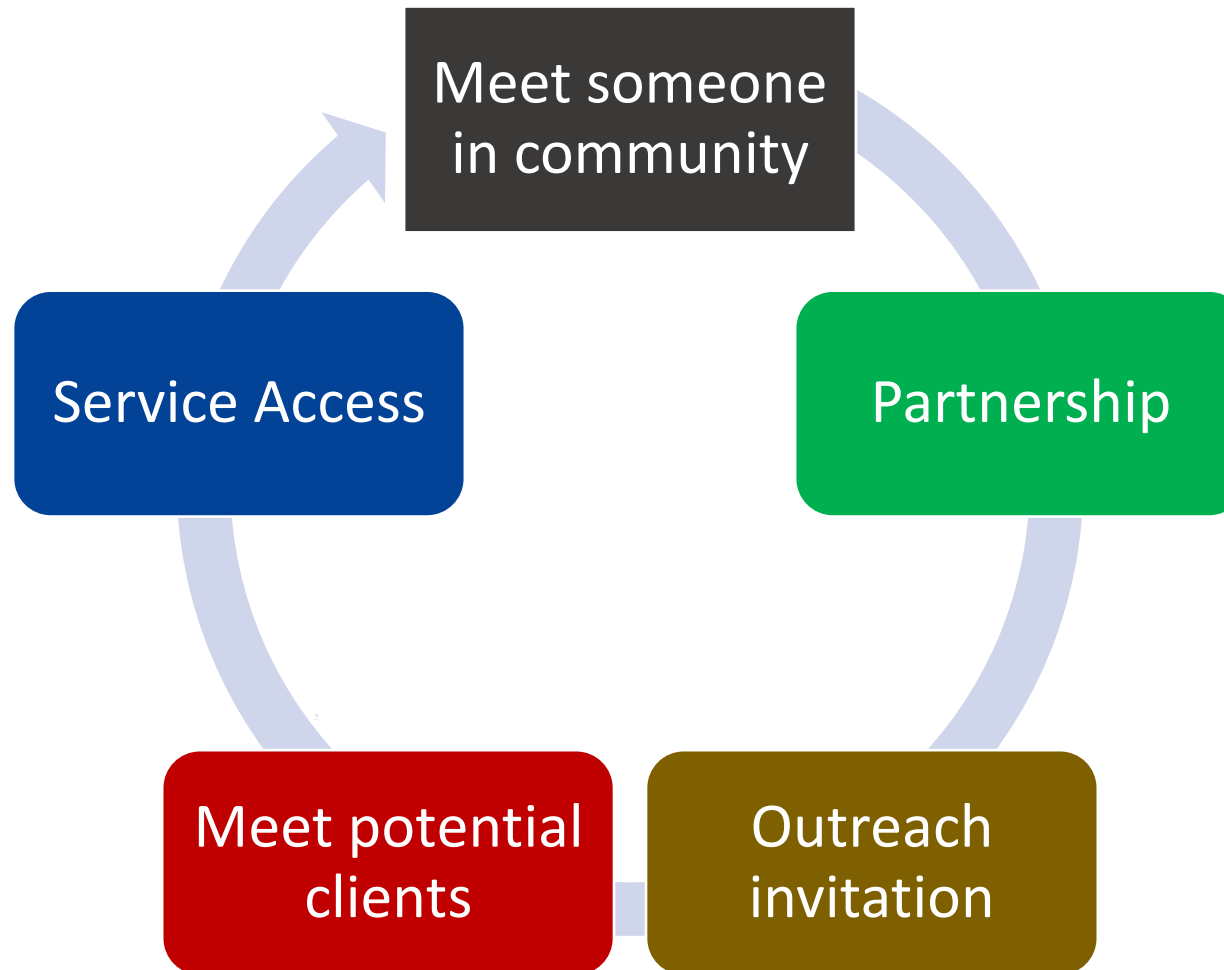


How do people in your community learn about your services?

Powered by  Poll Everywhere

Start the presentation to see live content. For screen share software, share the entire screen. Get help at pollev.com/app

One Traditional Method



**When we CARE
about older adults,
we all benefit**

Why It Works



When we CARE
about older adults,
we all benefit

Today's Proposal

- Use the CARE Index and American Community Survey/Census data to identify pockets of potentially vulnerable older adult
- Compare findings with data on service delivery
- Congratulate yourself or create a plan to address gaps



**When we CARE
about older adults,
we all benefit**

First, the Florida Elder Needs Index

- Modified from Florida's Elder Needs Index created by the Florida Department of Elder Affairs
 - Uses factors from the Older Americans Act to estimate pockets of potential need
 - Information used to target potential areas of high need and evaluate service delivery



When we CARE
about older adults,
we all benefit

The CARE Index

% 55+ living
<150%* FPL

% 55+ who identify
as racial/ethnic
minority

Ratio of #
disabilities to 65+
population

% of 60+ older
than age 85

% 60+ with limited
English proficiency

% 65+ living alone



**When we CARE
about older adults,
we all benefit**

ACS vs. Census Data

- ACS collected from a small statistically representative sample every year
- Available in 1-year and 5-year estimates
- Available at zip code level (most of the time) and other geographical breakdowns
- Similar to “long form” Census questions
- Captures changes over time vs. snapshot



Where to Find this Data

- Data.census.gov
- Explore or search by table code
 - FPL – B17024
 - Race/Ethnicity – B01001H
 - Number of Disabilities to 65+ population – S1810
 - % of older population 85+ – S0101
 - Limited English Proficiency – B16004
 - % 65+ Living Alone – B11010
- A little math involved but Excel can handle it (and you can, too!)



Step 1: Choose Your Table/Topic

- Start at data.census.gov



Explore Census Data

Learn about America's People, Places, and Economy

×

🔍

🔍 S0101: AGE AND SEX

[Use Advanced Search...](#)

Try searching for [grocery stores](#) in [Georgia](#) in [2017](#)

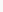
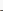
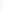

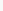



**When we CARE
about older adults,
we all benefit**

A vertical sidebar on the right side of the page. It contains two icons: a funnel icon labeled 'Filters' and a document icon labeled 'Results'. Both icons have a small red circle with the number '1' next to them.

1 Filt

Find

 Se
 123 Co
 Ge
 Su
 To
 Ye

American Community Survey

S0101 | AGE AND SEX

2020: ACS 5-Year Estimates Subject Tables

Notes Geos Years Topics Surveys Codes Hide Transpose Margin of Error Restore Excel CSV ZIP Print Map

United States

Total

Percent

Male

Label	Estimate	Margin of Error	Estimate	Margin of Error	Estimate
✓ Total population	326,569,308	*****	(X)	(X)	160,818,530
✓ AGE					
Under 5 years	19,650,192	±3,602	6.0%	±0.1	10,051,876
5 to 9 years	19,979,039	±28,497	6.1%	±0.1	10,191,107
10 to 14 years	21,107,910	±29,160	6.5%	±0.1	10,797,748
15 to 19 years	21,174,955	±7,796	6.5%	±0.1	10,816,797



**When we CARE
about older adults,
we all benefit**

Step 3: Choose Your Geographies

State,
County,
Zip Code
(ZCTA)

The screenshot shows the United States Census Bureau data tool interface. The main header displays 'United States Census Bureau' and 'S0101: AGE AND SEX'. Below this, there are tabs for 'All', 'Tables' (which is selected), 'Maps', and 'Pages'. The left sidebar contains icons for 'Filters', 'Results', and 'Geos'. The 'Geos' icon is circled in blue. The main content area shows the 'Select Geography' dialog box. This dialog box has a 'Geographic Entities' tab selected. It includes a search bar with 'Texas' entered. Below the search bar, there is a list of 'All Geographies' with checkboxes: 'Texas' (checked), 'Harris County, Texas', and 'Houston CCD, Harris County, Texas'. The 'Texas' option is circled in blue. A message at the bottom of the dialog box states: 'Available filters are limited by your chosen result in combination with selected filters. Some filters may be unavailable.'



When we CARE
about older adults,
we all benefit

Pitfall: Numbers or look-alikes?

- If you see the little green triangles – be careful
- You may need to right click and choose “Convert to Number”
- Good news – you can do a chunk at a time, just don’t include words

	El Paso County, Texas	ZCTA5 79821	ZCTA5 79835	ZCTA5 79902
Label	Estimate	Estimate	Estimate	Estimate
55 to 64 years:	86,222	586	1,096	2,576
Under .50	5,035	51	125	109
.50 to .74	4,153	35	69	114
.75 to 1.00	4,649	24	11	128
1.00 to 1.25	4,597	63	40	178
1.25 to 1.49	5,395	67	111	73
1.50 to 1.74	4,293	18	227	39
1.75 to 1.84	1,761	5	27	0
1.85 to 1.99	3,052	0	42	93
2.00 to 2.99	15,360	122	142	294
3.00 to 3.99	11,380	155	129	441
4.00 to 4.99	7,914	6	104	171
5.00 and over	18,633	40	69	936
65 to 74 years:	57,524	329	981	2,438
Under .50	2,580	0	51	284
.50 to .74	2,731	0	40	66



When we CARE
about older adults,
we all benefit

Step 5: Combine Results on New Excel Sheet

- Add up the results and divide by 6
- An index is about relationship

	El Paso County	79821	79835	79902
Poverty <150%	0.313075872	0.541895	0.335329	0.331033
55+ Racial/ethnic minority	0.686924128	0.458105	0.664671	0.668967
Disabilities	1.024466081	0.962373	0.898477	0.825646
85+	0.101057094	0.064806	0.051528	0.133054
LEP	0.09864367	0.067339	0.057351	0.161152
Living alone	0.238860708	0.17945	0.236675	0.287633
Raw score	2.463027554	2.273968	2.244031	2.407485
	0.410504592	0.378995	0.374005	0.401248



When we CARE
about older adults,
we all benefit



In what order would you target these communities? El Paso County has 140,000 older adults (17%)

79849 (2,100 older adults/18%)

79853 (466 older adults/20%)

79901 (2,800 older adults/28%)

79936 (18,061 older adults/17%)

Communities by the Numbers

Community	Data Description
El Paso County	More than 140,000 older adults (17%) of the population live in the county; almost 1 in 3 are below 150% FPL and 1 in 3 have LEP; high rate of disability (1.02); 69% are a racial or ethnic minority
79849	2,100 older adults (18%); almost 100% racial/ethnic minority, 49% below 150% FPL; 80% don't speak English "very well;" one of the highest rates of disability in the county
79853	466 older adults (20%); almost 100% racial/ethnic minority; 81% with LEP, 57% below FPL; high disability rate but not quite as high as the county
79901	Home to 2,800 older adults (28% population); most residents at or below 150% FPL; there are more than 1.4 disabilities per person living in the zip code
79936	18,061 older adults (17%); 19% below 150% FPL, disability rate is 16% lower than county; 22% LEP; 86% a racial/ethnic minority



When we CARE
about older adults,
we all benefit

CARE Index Results

Location		Score		
	79901	0.783755	79935	0.457404
	79849	0.62802	El Paso County	0.451032
	79905	0.616042	79821	0.444098
	79915	0.581741	79902	0.417973
	79853	0.572168	79924	0.417434
	79904	0.56251	79936	0.401311
	79907	0.537156	79935	0.395174



When we CARE
about older adults,
we all benefit

Using (Fabricated) Data

El Paso County

- 142,939/3,476 unduplicated
- 2.4%

77849

- 2,078/125 unduplicated
- 6.0%

2

79853

- 466/32 unduplicated
- 4.5%

3

79901

- 2,521/33 unduplicated
- 1.3%

1

79936

- 18,061/1,567 unduplicated
- 8.7%

4

served/
60+ pop =
service %



When we CARE
about older adults,
we all benefit

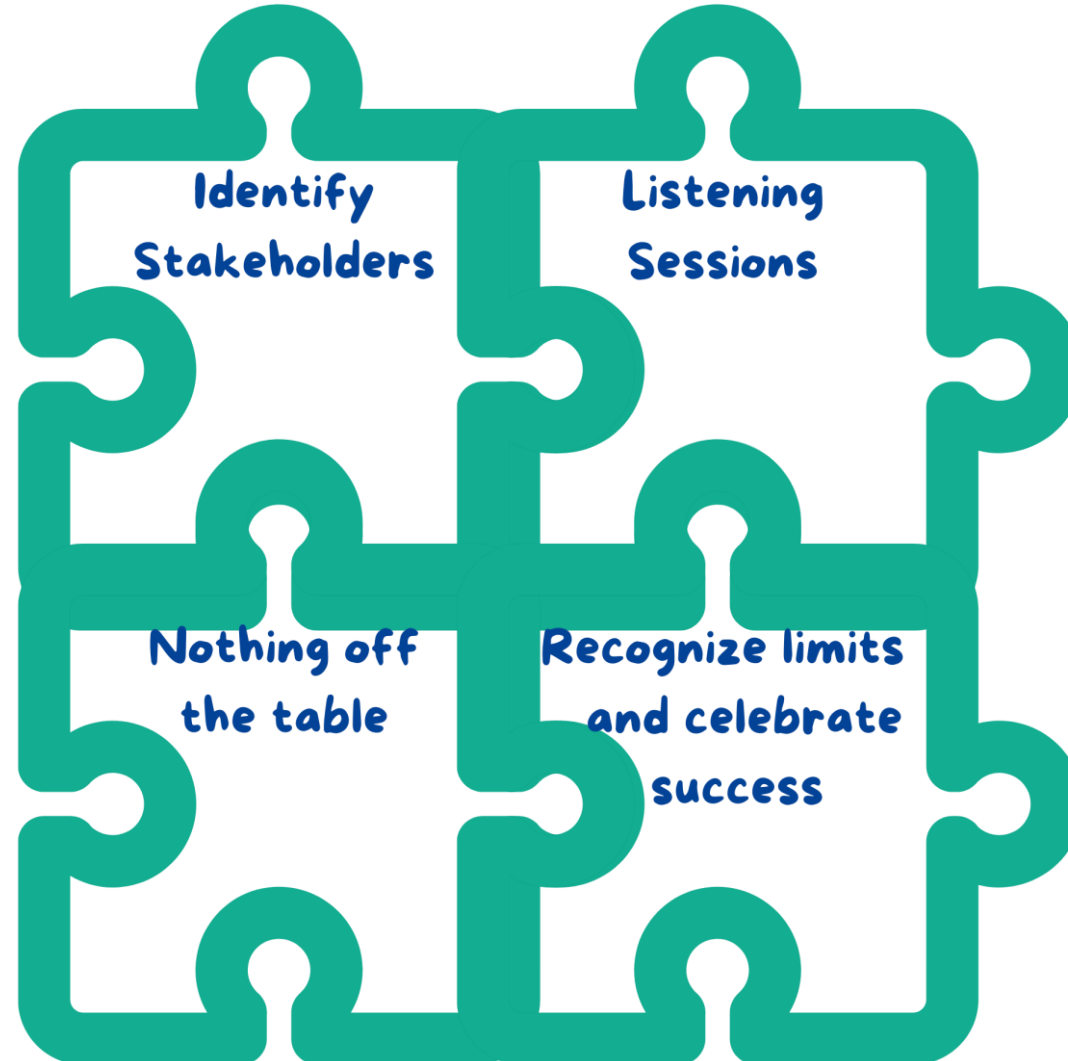
A Potential Mismatch

- Highest indexed zip code had lowest service percentage
- Ask questions
 - Why is it this way?
 - Why does it have to be this way?
 - In what ways are we contributing to the situation?
 - Where can we make even incremental improvements?
 - Who needs to be at the table to help us reach our goals?

77849	<ul style="list-style-type: none">• 2,078/125 unduplicated• 6.0%	2
79853	<ul style="list-style-type: none">• 466/32 unduplicated• 4.5%	3
79901	<ul style="list-style-type: none">• 2,521/33 unduplicated• 1.3%	1
79936	<ul style="list-style-type: none">• 18,061/1,567 unduplicated• 8.7%	4

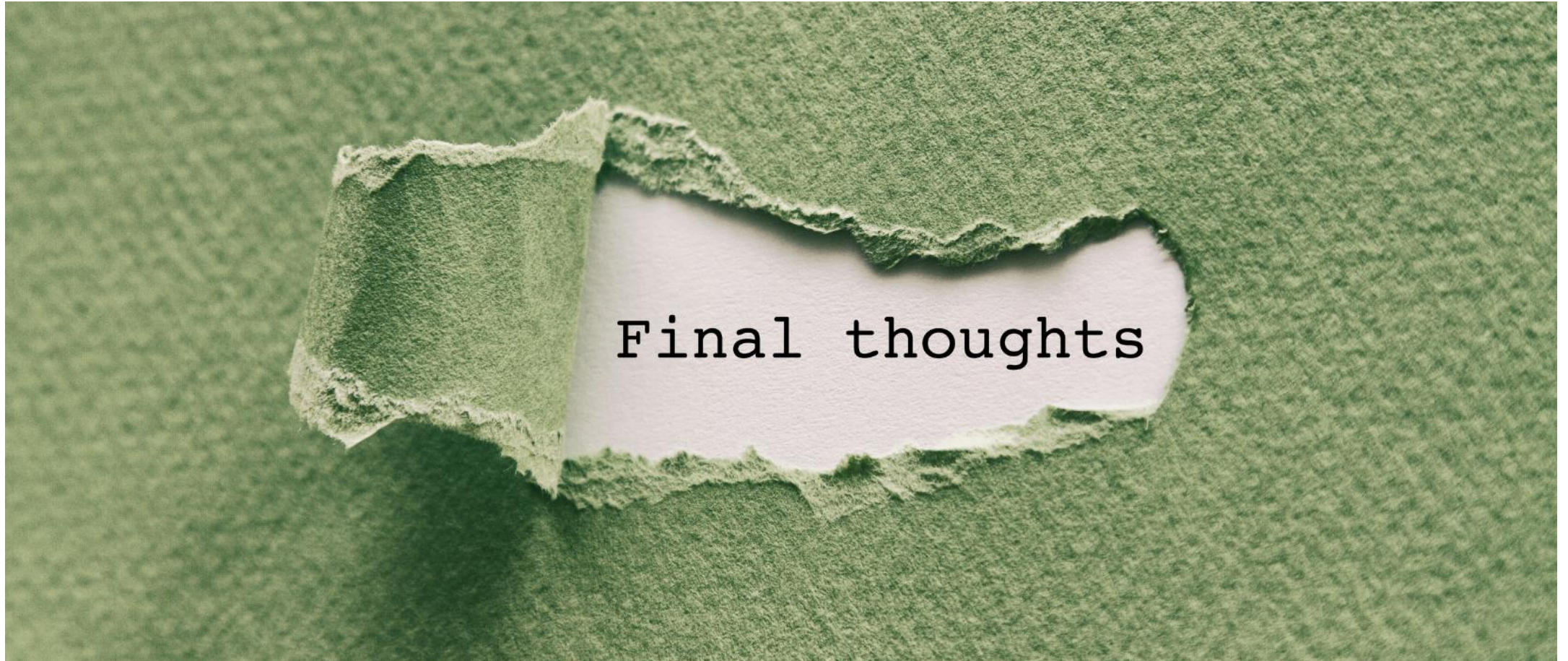


Become the Puzzle Master



When we CARE
about older adults,
we all benefit

You Got This!



**When we CARE
about older adults,
we all benefit**

Connect with CARE

Tammy Mermelstein, JD, MSW

tammy@whenwecare.org

346-704-4233



**When we CARE
about older adults,
we all benefit**

Pick Up Your Copy Today



Presentation

If you cannot access Google Drive,
email tammy@whenwecare.org
for a PDF of this presentation.



**When we CARE
about older adults,
we all benefit**

ACS Table Math

The following slides have formulas to calculate each of the CARE Index factors. Please reach out to me at tammy@whenwecare.org if you need assistance.



**When we CARE
about older adults,
we all benefit**

S0101 (Age) Math

- Broken down by age sex
- Find the “60 and over” cell in the Selected Age Categories section
- Do the same for 85 and over in the Age section

Example formula
 $=B23/B33$



When we CARE
about older adults,
we all benefit

El Paso County, Texas				
	Total	Percent	Male	Percent Male
Label	Estimate	Estimate	Estimate	Estimate
75 to 79 years	17,452	2.1%	7,206	1.7%
80 to 84 years	12,093	1.4%	4,870	1.2%
85 years and over	14,445	1.7%	5,167	1.3%
SELECTED AGE CATEGORIES				
5 to 14 years	126,283	15.1%	64,135	15.5%
15 to 17 years	38,549	4.6%	19,601	4.7%
Under 18 years	227,515	27.2%	115,779	28.0%
18 to 24 years	95,236	11.4%	51,059	12.4%
15 to 44 years	363,893	43.5%	188,271	45.6%
16 years and over	635,058	75.9%	310,551	75.2%
18 years and over	609,400	72.8%	297,292	72.0%
21 years and over	570,618	68.2%	276,437	66.9%
60 years and over	142,939	17.1%	61,661	14.9%
62 years and over	127,072	15.2%	54,602	13.2%
65 years and over	101,946	12.2%	43,506	10.5%
75 years and over	43,990	5.3%	17,243	4.2%
SUMMARY INDICATORS				

B17024 (Ratio of Income to Poverty) Math

- Broken down by age and poverty level (55-64, 65-74, 75+)
- Add cells for “Under .50” to “1.25-1.49”) for each age range
- You will need total population (55+) – just add the total for age ranges

	El Paso County, Texas	ZCTA5 79821	ZCTA5 79835	ZCTA5 79902
Label	Estimate	Estimate	Estimate	Estimate
55 to 64 years:	86,222	586	1,096	2,576
Under .50	5,035	51	125	109
.50 to .74	4,153	35	69	114
.75 to .99	4,649	24	11	128
1.00 to 1.24	4,597	63	40	178
1.25 to 1.49	5,395	67	111	73
1.50 to 1.74	4,293	18	227	39
1.75 to 1.84	1,761	5	27	0
1.85 to 1.99	3,052	0	42	93
2.00 to 2.99	15,360	122	142	294
3.00 to 3.99	11,380	155	129	441
4.00 to 4.99	7,914	6	104	171
5.00 and over	18,633	40	69	936
65 to 74 years:	57,524	329	981	2,438
Under .50	2,580	0	51	284
.50 to .74	3,731	6	40	66

Example formula

=SUM(Data!B96:B100)+SUM(Data!B109:B113)+
SUM(Data!B122:B126)

Number Below/Total Pop = ratio



When we CARE
about older adults,
we all benefit

B01001H (Race/Ethnicity) Math

- Avoids data suppression issues
- Use 55+ population #s
- Add rows from both male and female
- White, not Hispanic/Total Pop (% White, not Hispanic)
- Subtract from 1 for % racial/ethnic minority

Example formulas

=SUM(Data!B15:B18+Data!C30)

Answer/Total Pop 55+ = ratio White

1-ratio White = % racial/ethnic minority



When we CARE
about older adults,
we all benefit

	El Paso County, Texas	ZCTA5 79821	ZCTA5 79835	ZCTA5 79902
Label	Estimate	Estimate	Estimate	Estimate
65 to 74 years	5,349	101	72	440
75 to 84 years	2,443	34	25	80
85 years and over	1,197	0	12	137
Female:	44,203	180	354	1,643
Under 5 years	2,918	0	13	81
5 to 9 years	2,431	0	0	80
10 to 14 years	2,449	0	37	33
15 to 17 years	1,296	0	17	18
18 and 19 years	697	0	16	44
20 to 24 years	2,897	0	0	100
25 to 29 years	3,625	41	32	137
30 to 34 years	3,073	11	29	43
35 to 44 years	5,009	0	58	205
45 to 54 years	4,626	29	25	72
55 to 64 years	5,722	34	19	364
65 to 74 years	4,814	18	60	197

S1810 (Disabilities) Math

- Use 65+ population #s
- Add “With a disability” for each type of disability for the 65+ population
- # of people reporting disabilities/65+ population

Example formulas

=Data!C33+Data!C43+Data!C51+Data!C59+Data!C67+Data!C74

Answer/Total Pop 65+ = disability ratio

	El Paso County, Texas			ZCTA5 79821	
	Total	With a disability	Percent with a disability	Total	With a disability
Label	Estimate	Estimate	Estimate	Estimate	Estimate
65 to 74 years	57,524	18,665	32.40%	329	13
75 years and over	42,819	24,808	57.90%	362	13
DISABILITY TYPE BY DETAILED AGE					
With a hearing difficulty	(X)	27,418	3.40%	(X)	18
Population under 18 years	227,407	1,378	0.60%	1,726	
Population under 5 years	62,683	398	0.60%	635	
Population 5 to 17 years	164,724	980	0.60%	1,091	
Population 18 to 64 years	485,458	10,223	2.10%	3,589	8
Population 18 to 34 years	205,158	1,906	0.90%	1,500	2
Population 35 to 64 years	280,300	8,317	3.00%	2,089	5
Population 65 years and over	100,343	15,817	15.80%	691	10
Population 65 to 74 years	57,524	5,742	10.00%	329	2
Population 75 years and over	42,819	10,075	23.50%	362	7



When we CARE
about older adults,
we all benefit

B16004 (Limited English) Math

- Use 65+ population #s in this chart for this calculation only
- For 65+ add “not well” and “not at all” for each language
- # LEP/65+ population from this chart

	El Paso County, Texas	ZCTA5 79821	ZCTA5 79835	ZCTA5 79902
Label	Estimate	Estimate	Estimate	Estimate
65 years and over:	101,946	773	1,576	4,172
Speak only English	25,471	200	349	1,073
Speak Spanish:	74,326	558	1,165	3,048
Speak English "very well"	26,032	160	199	1,608
Speak English "well"	13,700	44	149	349
Speak English "not well"	14,240	141	365	443
Speak English "not at all"	20,354	213	452	648
Speak other Indo-European languages:	953	15	0	51
Speak English "very well"	754	15	0	51
Speak English "well"	181	0	0	0
Speak English "not well"	18	0	0	0
Speak English "not at all"	0	0	0	0
Speak Asian and Pacific Island languages:	946	0	62	0
Speak English "very well"	285	0	0	0

Example formulas

=Data!B53+Data!B54+Data!B58+Data!B59+Data!
!B63+Data!B64+Data!B68+Data!B69

Answer/Total Pop 65+ = LEP ratio



When we CARE
about older adults,
we all benefit

B11010 (Living Alone) Math

- Use 65+ population #s from S1810 (community living)
- Add Male, Living Alone, 65+ and Female, Living Alone, 65+
- # living alone/65+ population

	El Paso County, Texas	ZCTA5 79821	ZCTA5 79835	ZCTA5 79902
Label	Estimate	Estimate	Estimate	Estimate
Male householder:	36,965	212	456	2,167
Living alone:	30,803	184	414	1,795
Householder 15 to 64 years	23,278	97	347	1,371
Householder 65 years and over	7,525	87	67	424
Not living alone:	6,162	28	42	372
Householder 15 to 64 years	5,504	10	42	353
Householder 65 years and over	658	18	0	19
Female householder:	38,533	172	460	2,079
Living alone:	34,248	164	427	1,687
Householder 15 to 64 years	17,805	127	121	976
Householder 65 years and over	16,443	37	306	711
Not living alone:	4,285	8	33	392
Householder 15 to 64 years	3,497	8	9	325

Example formulas

=Data!B7+Data!B14

Answer/Total Pop 65+ = living alone



When we CARE
about older adults,
we all benefit