

SART Basics for Counties Interested in Regional Response

10:00 am, Thursday, November 11, 2021



e-Learning
TEXAS ASSOCIATION OF REGIONAL COUNCILS

UPCOMING EVENTS

THE LOCAL GOVERNMENT COST OF PROVIDING MENTAL HEALTH SERVICES

2:00 PM, NOVEMBER 16, 2021

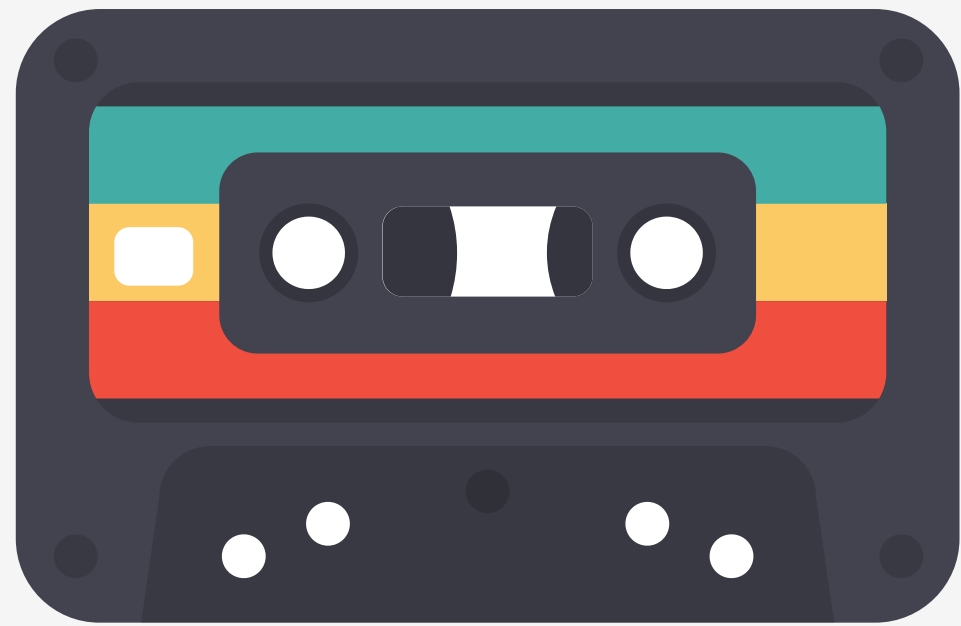
The Texas Health and Human Services Commission (HHSC) recently published dashboards estimating the cost to local governments of services for people experiencing a mental health crisis. As part of the All Texas Access project, HHSC collaborated with local mental and behavioral health providers to study the costs of local government response to those experiencing a mental health crisis and the quantitative impact on the community. In this webinar, staff will share their findings and will review the cost model dashboard created as part of the All Access Texas project and how the project will use the data to identify and address the needs throughout the state.



e-Learning

TEXAS ASSOCIATION OF REGIONAL COUNCILS

HOUSEKEEPING & REMINDERS



Recordings
Available

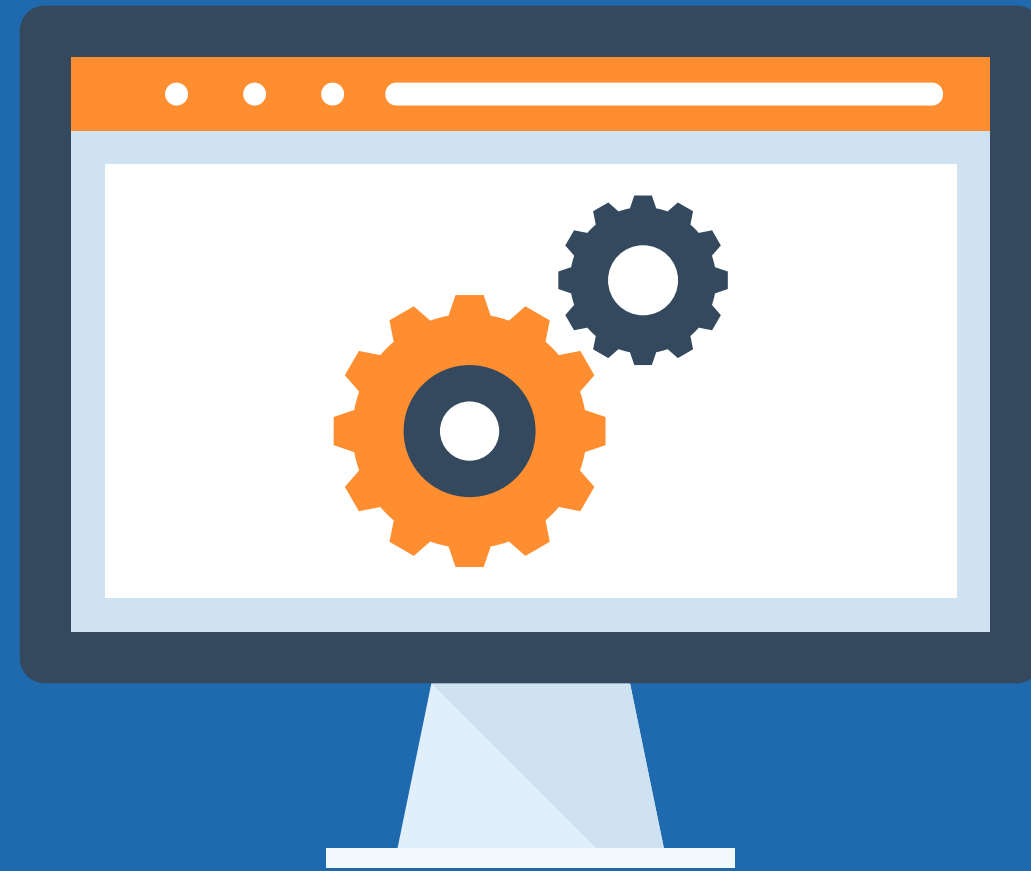


Share Your
Ideas

kliledowty@txregionalcouncil.org



e-Learning
TEXAS ASSOCIATION OF REGIONAL COUNCILS



RESOURCES AVAILABLE

www.txregionalcouncil.org/sart





LISTEN ONLY MODE

Share your thoughts and questions in the chat box!



e-Learning

TEXAS ASSOCIATION OF REGIONAL COUNCILS





MEET THE PRESENTERS



KRISTEN LENAU

Senior Policy Advisor



HALEH COCHRAN

Systems Change Advocate





Regional SARTs

Kristen Lenau
Senior Policy Advisor
klenau@taasa.org

Haleh Cochran
Systems Change Advocate
hcochran@taasa.org

TAASA

TAASA is the unifying voice to eliminate sexual violence in Texas. As the statewide coalition of survivors, advocates, rape crisis centers, and allied professionals, we are committed to fostering a culture that respects the fundamental rights and dignity of all.

Public Policy

Prevention

Rape Crisis Center Support

Overview

- Texas SARTs
- Resource mapping
- Size & Membership
- Planning for protocol
- Leadership
- Meetings

Texas SARTs: Counties <250k

- Bastrop, Lee, Fayette, Colorado
- Brazos, Grimes, Burleson, Madison, Washington, Robertson
- Gonzales, Guadalupe, Karnes, and Wilson
- Grayson, Fannin
- Cooke*
- Hays, Caldwell
- Val Verde
- Port Lavaca, Victoria, Dewitt, Calhoun, Jackson, Gonzales, Goliad, Lavaca
- Hopkins
- Hunt
- Midland
- Smith
- Parker- new!

*serves multiple crime types

Texas SARTs

Pros/Cons from Regional Teams

- Attendance can be a challenge
- Occasional in person meetings for the whole region seem to help with relationship building
- You have the ability to identify trends across several counties
- Food at meetings goes a long way
- Some counties are more engaged and committed than others, leading to imbalance in protocol implementation

Statutory minimum membership

1. A Sexual Assault Program that provides services in the county
2. A Prosecutor with jurisdiction over SA cases
3. A Sheriff or designee
4. A Chief or sworn designee from the Largest Municipal Law Enforcement Agency
5. A Mental Health Provider that provides services in the county(may be the SAP)
6. A Sexual Assault Forensic Examiner that conducts exams within the county
7. Other individuals or entities determined by the team

Resource Mapping

Do you have an existing team in the planned region?

If yes: Who attends?

What areas do they cover?

Can you support them in expanding coverage or adding members?

Are they open to expansion?

Resource Mapping

If you do not have an existing team to build off:

How many of **each** of the 6 entities are in the region?

Where are they located?

How do these agencies respond by population or county?

What are the dynamics on the ground?



County X

County X technically has all 6 entities within their borders and are interested in building their own team.

However, their local healthcare provider is not the Forensic Exam Provider for them, victims are being taken out of the counties' borders to get exams.

Therefore, County X invited the SANE from County Y, to also be a member of their SART.

Regional Team Sizes

Small: 4 or less counties

Medium: 5+ counties

Large: 10+ counties

Team Membership

Counties may only have 2-3 agencies each.

County A: District Attorney*, Sheriff, Sexual Assault Program(also does counseling)

County B: District Attorney*, Sheriff, Municipal LE

County C: District Attorney*, Sheriff, SANE/Healthcare provider

Your team should start with this group(7 agencies)

Size & Membership

If you are putting together a team with 10 or more counties, you could easily be looking at 30+ agencies that initially need to be at the table.

A handful of existing SARTs in Texas have regular attendance of 50+ people. Often an agency will want or need to send multiple people to a meeting.

If the region serves several jurisdictions(military/tribal/municipal/college), the membership needs will be higher.

Appointing Members

- Consider drafting 1 resolution with shared language for each county forming the team
- Allow Counties to fill in their respective appointees
- Invite any agencies that will be expected to implement the regional protocol
- People are permitted to attend meetings at the team's discretion, even without being official members. This will allow time for new teams to figure out who else to invite and how to organize.

Team Leadership

More counties= more agencies=need for more infrastructure

SARTs use a mix of leadership methods

- Steering committee
- Coordinator & Chair
- Co-Chairs/Co-Presiding Officers

Meetings: new teams

- 1st meeting to be held by December 1st, 2021
- Frontload infrastructure
 - Schedule & leadership
 - Information sharing processes
 - Decision making
 - Conflict resolution process

Meetings: existing teams

- Begin discussions with active members around integrating new requirements
- Ensure that meetings are happening regularly
- Appoint members and formalize the group as needed to comply with statute
- Team should have input on additional members or attendees
- Existing teams may not have a written protocol yet

Questions?

Contact us at SART@taasa.org

QUESTIONS?



Texas Association Against

Sexual Assault

SART@taasa.org

Kimberly Lile Dowty

kliledowty@txregionalcouncil.org



e-Learning

TEXAS ASSOCIATION OF REGIONAL COUNCILS