

# Local Governments | Gap Analysis Dashboard

Total Households (2019)

**2,410,735**

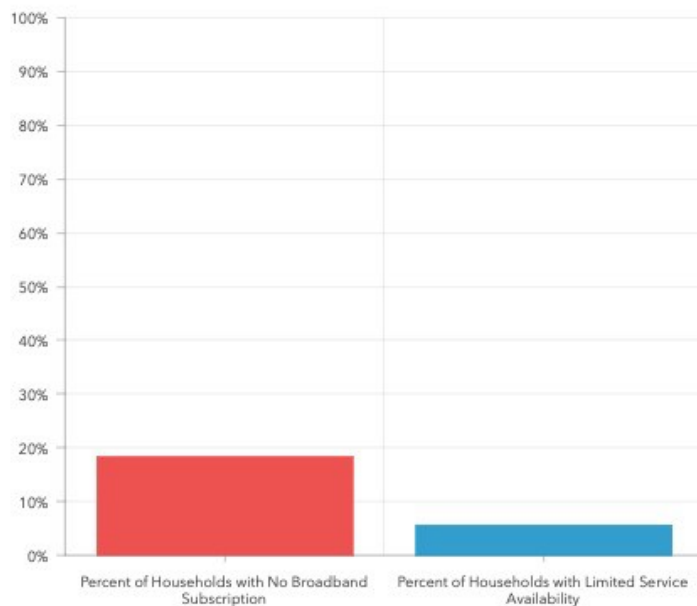
Number of Households with No Broadband Subscription

**365,029  
(15.1%)**

Number of Households with Limited Service Availability

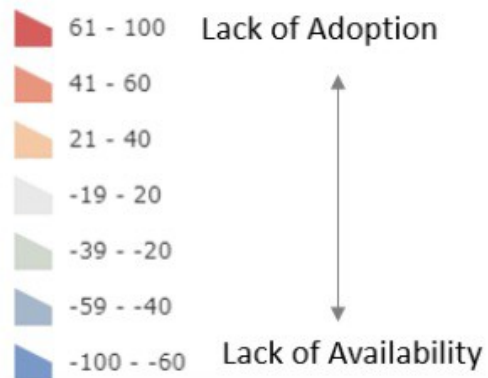
**104,865  
(4.3%)**

Difference between Broadband Usage & Availability

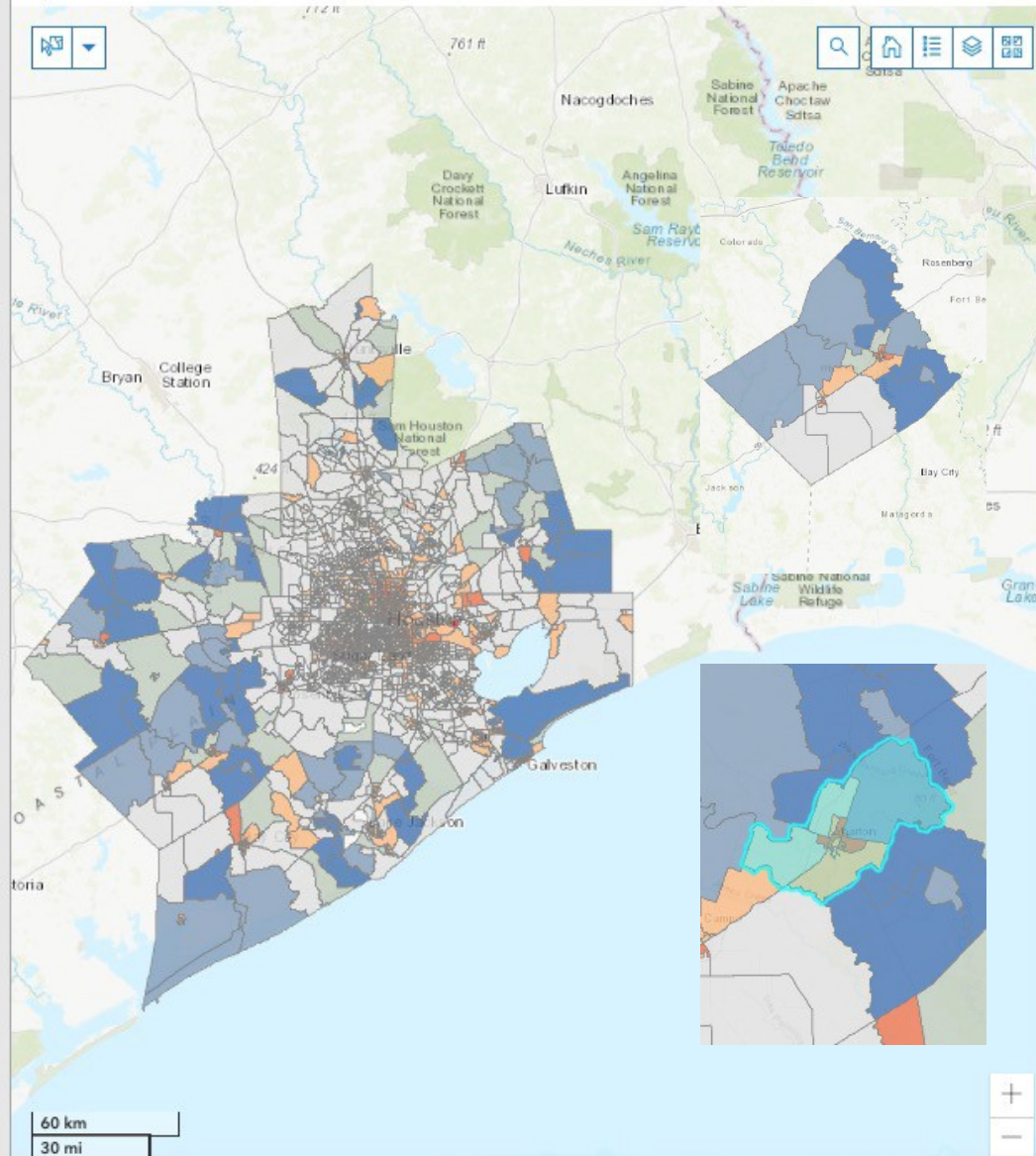


\* Percentages of graph above are calculated using an unweighted average. If you select more than one block group, it may differ from the actual percentage.

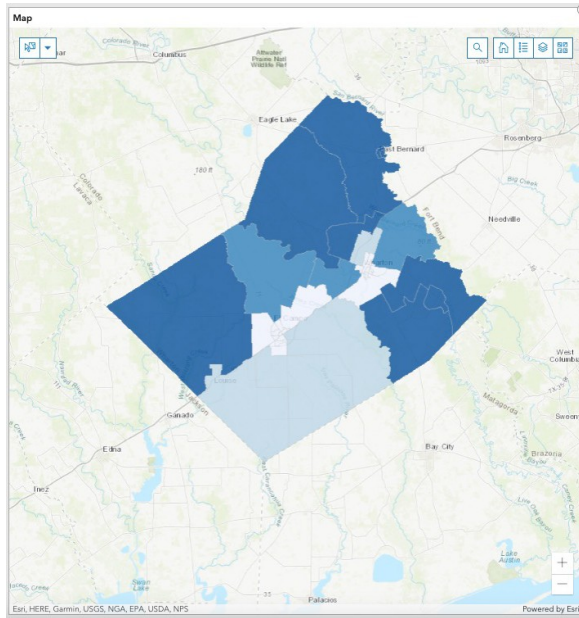
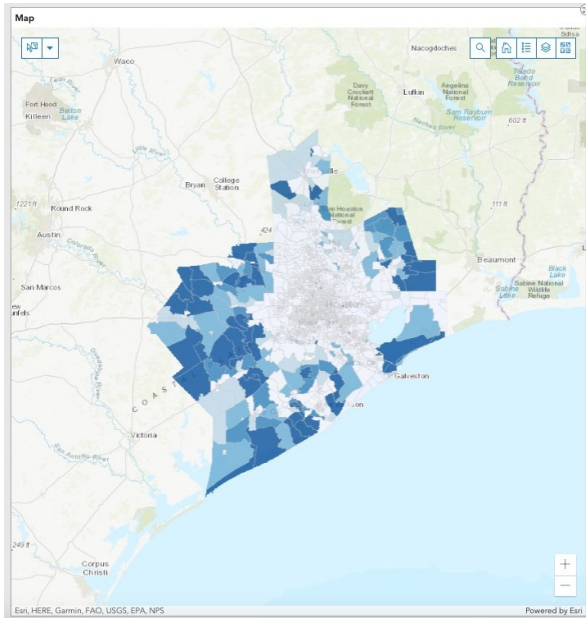
Difference between Adoption and Availability



Map



# Service Availability & The Rural Digital Divide



# User Adoption & The Urban Digital Divide

