

Regional Solid Waste Grants Program Funding Report Fiscal Years 2014/2015



IMPACTS & RESULTS IN YOUR REGION

Regional Solid Waste Grants Program

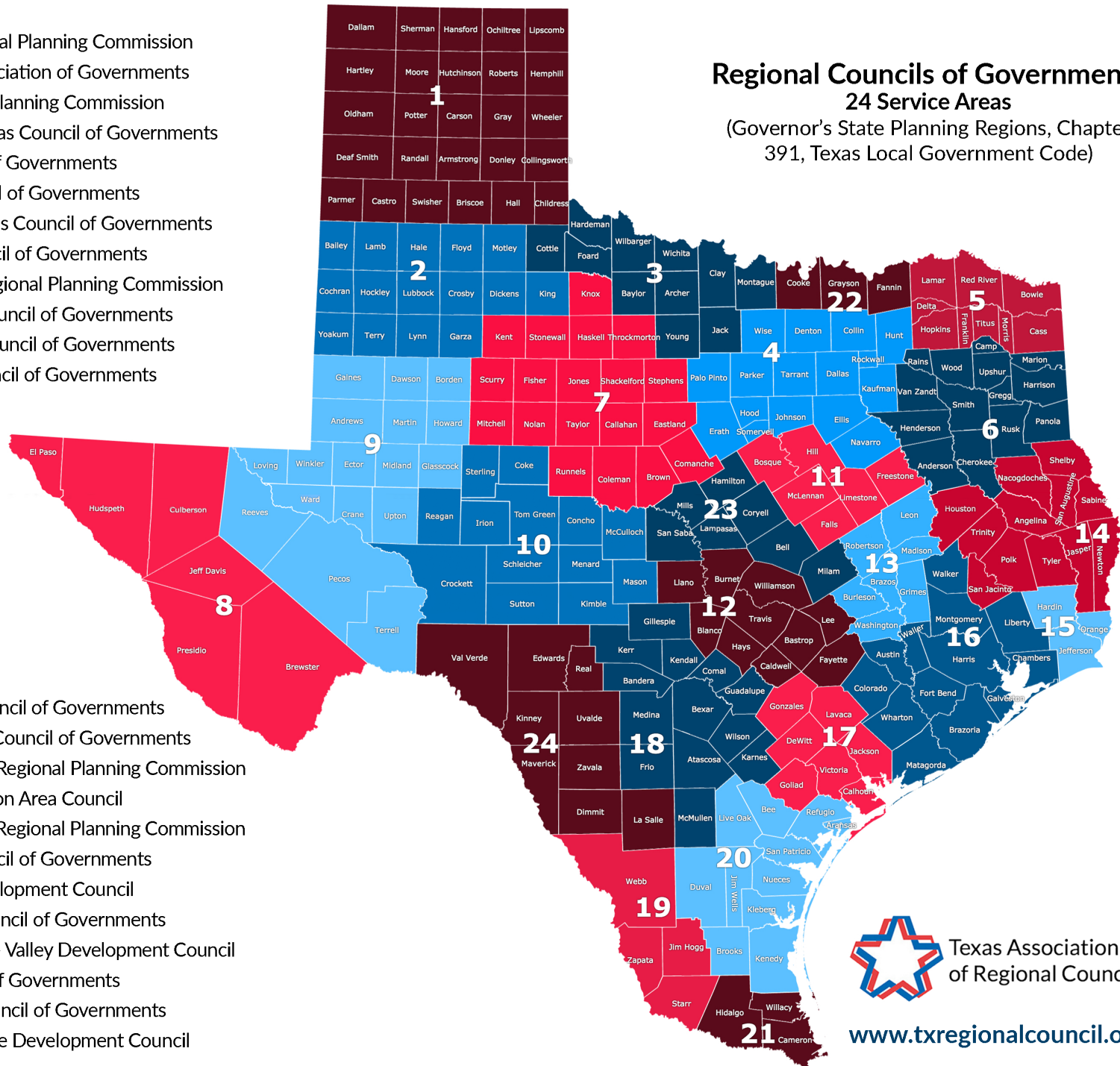
Texas Solid Waste Disposal Act
Chapter 361
GR-D Fund 5000

33 percent of the revenue is dedicated to local and regional solid waste projects consistent with regional plans approved by the commission in accordance with this chapter and to update and maintain those plans. Those revenues shall be allocated to municipal solid waste geographic planning regions for use by local governments and regional planning commissions according to a formula established by the commission that takes into account population, area, solid waste fee generation, and public health needs. Each planning region shall issue a biennial report to the legislature detailing how the revenue is spent.

1. Panhandle Regional Planning Commission
2. South Plains Association of Governments
3. Nortex Regional Planning Commission
4. North Central Texas Council of Governments
5. Ark-Tex Council of Governments
6. East Texas Council of Governments
7. West Central Texas Council of Governments
8. Rio Grande Council of Governments
9. Permian Basin Regional Planning Commission
10. Concho Valley Council of Governments
11. Heart of Texas Council of Governments
12. Capital Area Council of Governments
13. Brazos Valley Council of Governments
14. Deep East Texas Council of Governments
15. South East Texas Regional Planning Commission
16. Houston-Galveston Area Council
17. Golden Crescent Regional Planning Commission
18. Alamo Area Council of Governments
19. South Texas Development Council
20. Coastal Bend Council of Governments
21. Lower Rio Grande Valley Development Council
22. Texoma Council of Governments
23. Central Texas Council of Governments
24. Middle Rio Grande Development Council

Regional Councils of Governments 24 Service Areas

(Governor's State Planning Regions, Chapter
391, Texas Local Government Code)



Texas Association
of Regional Councils

www.txregionalcouncil.org



**Grantees collected
over 255,000 tires.**

**When stacked
together, that's
taller than**

584

Texas Capitol Buildings.





Trash

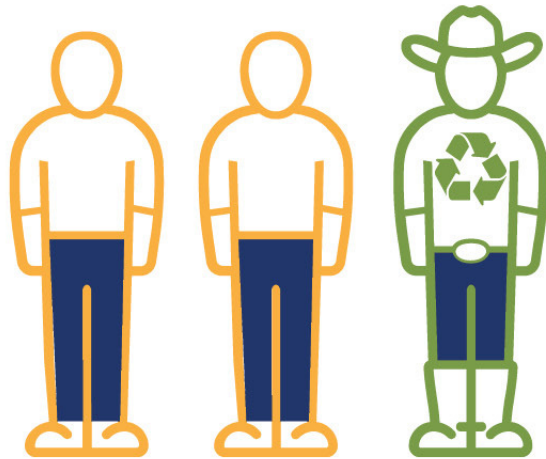
Garbage is picked up from homes and businesses, loaded into trucks and delivered to landfills.

Landfill

Trucks assessed a "tipping fee" for trash they deliver to the landfill. 33% of the amount collected is deposited into a state dedicated account for the Regional Solid Waste Grants Program.

Legislature

The Legislature appropriates funds from the dedicated account for the regional grants.



1 in 3

**Texans used a
grant-funded
recycling facility.**

"Cowboy" icon by Artem Kovyazin from thenounproject.com

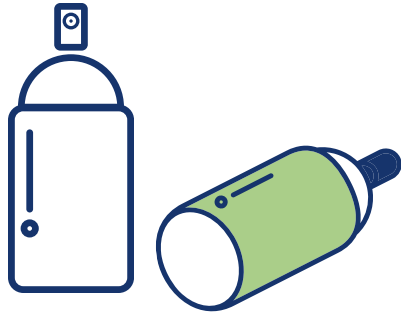


338,000

**Texas students attend
a school district
with a grant-funded
recycling program.**

"School" icon by Hea Poh Lin from thenounproject.com

20 YEARS OF THE REGIONAL SOLID WASTE GRANTS PROGRAM



14,000

tons
household hazardous
waste



4,376

grants given
to local communities



4.2

million tons
of recyclables



200,000

illegally dumped waste
cleaned up



315,000

illegal dumping
investigations

Who Benefits?

226

Projects funded statewide

151

Cities

53

Counties

10

COGs

3

School Districts

9

*Other
Districts/Authorities*

Regional Planning and Coordination

COGs help local governments better deliver services to their constituents by providing technical assistance to local governments in the implementation and evaluation of solid waste management programs; education and outreach activities, programs, and printed materials that provide a unified message but can also be customized for local governments; and regional training such as environmental enforcement for peace officers and disaster debris management for emergency managers

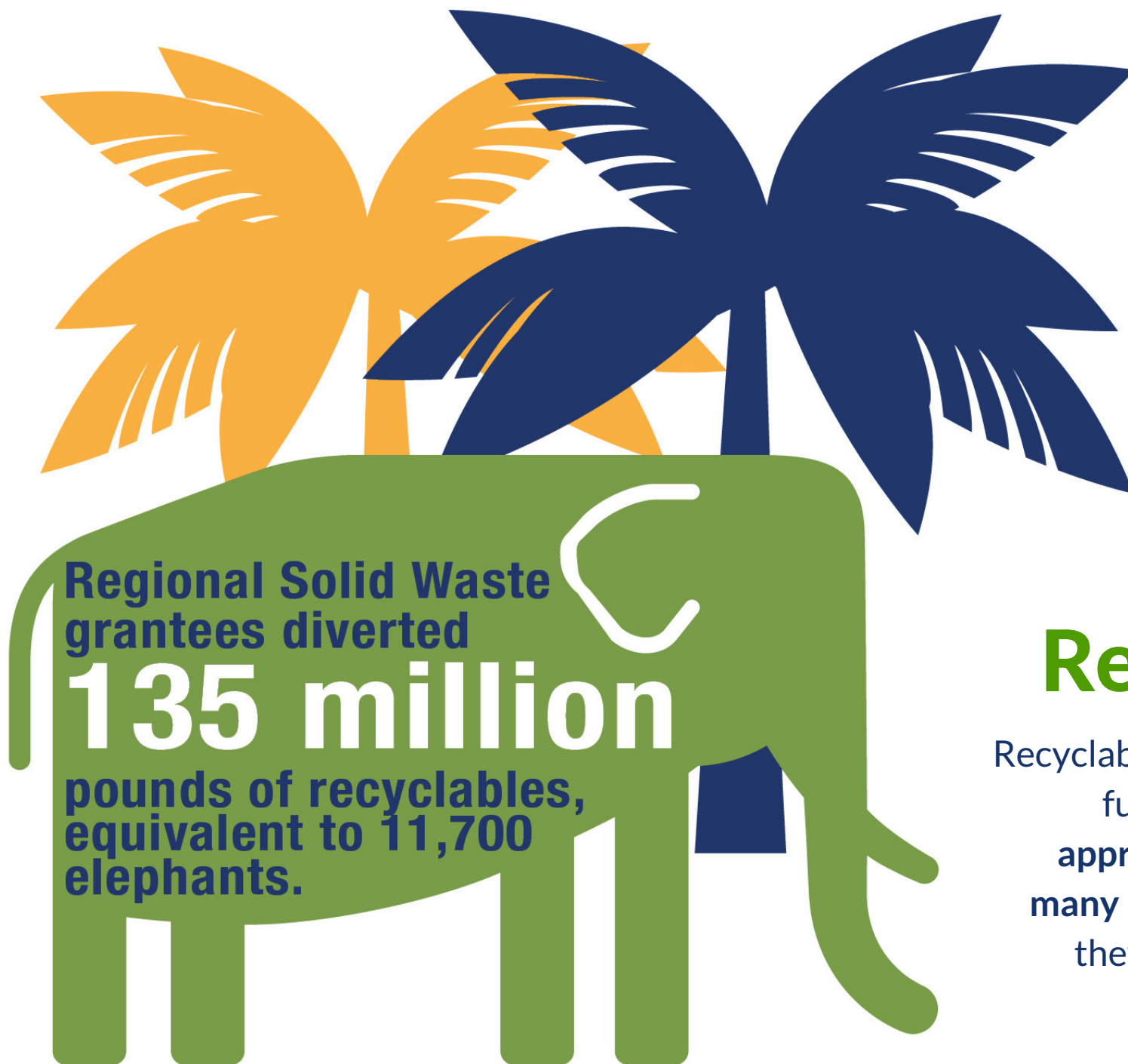


Solid Waste Advisory Committees
Closed landfill inventory
Data collection
Educational materials
Permit review
Public accountability



Illegal Dumping

Grant-funded programs kept Texas clean by enforcing solid waste laws and identifying **2,337 offenders**. Partners collected nearly **\$180,000** in fines.



**Regional Solid Waste
grantees diverted**

135 million

**pounds of recyclables,
equivalent to 11,700
elephants.**

Recyclables

Recyclables collected by grant-funded programs create approximately **10 times as many jobs** for Texans than if they were disposed of in a landfill.

Community Collection

Regional solid waste grantees collected nearly **100 million pounds of trash and recyclables**, keeping Texas communities beautiful.

Texans collected enough trash and recyclables during cleanups to fill

199 football fields
with one foot of garbage.



"Football Helmet" icon by Edward Boatman, "Trash" icon by Marianna Marozzi, "Trash" icon by Chiccabubble, and "Goal Post" icon by Valentina Velcro from thenounproject.com



Partners collected enough
left-over paint to trace a line
around the State of Texas

14 times.

Household Hazardous Waste

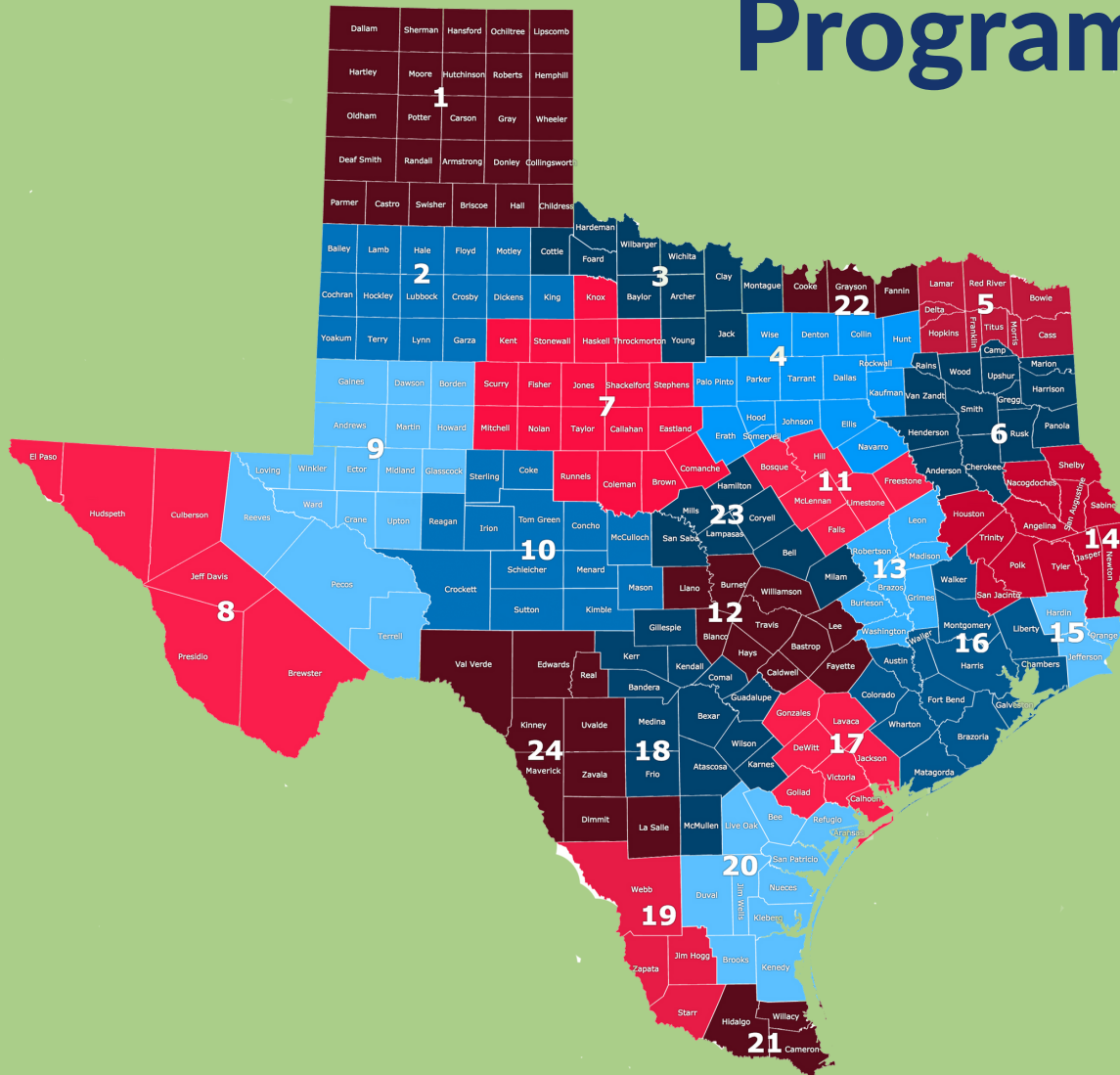
580,000 Texans
dropped off household
hazardous waste,
including paint, at
permanent facilities and
68 one-time events.

Used Electronics

During Fiscal Years 2014/2015,
with Regional Solid Waste
Grants Program funds, local
governments collected
**14,569.80 tons of used
electronics.**



Program FY 2014/2015



Alamo Area Council of Governments

Pg. 16

Oil and fuel filters collected during household hazardous waste collection events and from the City of New Braunfels' year-round maintenance are crushed and recycled as scrap metal. The City recycled **50.4 gallons of used oil** and **1,730 filters as scrap metal**.

This oil filter crushing apparatus drains any remnant liquid from filters before crushing them.



The background of the slide is a black and white photograph showing a large pile of debris and construction materials. On the left, there are stacks of long, rectangular objects, possibly pipes or beams, some wrapped in plastic. In the center and right, there is a large, messy pile of debris, including what looks like a wooden frame, plastic bags, and other unidentifiable items. The scene appears to be the aftermath of a disaster, likely the 2015 floods mentioned in the text. The entire image is overlaid with a semi-transparent orange rectangle that contains the text.

Capital Area Council of Governments

Pg. 22

Thanks to Regional Solid Waste Grant Program funds, **5 counties** in the CAPCOG region cleaned up more than **4,000 tons of debris** following the 2015 floods.

Central Texas Council of Governments

Pg. 24

Five household hazardous waste collection events in the CTCOG region resulted in more than **1,300** people disposing more than **100,000** pounds of household hazardous waste and **3,639** gallons of used oil and antifreeze.



Houston-Galveston Area Council

Pg. 38

Residents in unincorporated Harris County Precinct 1 now have a **drop-off location for heavy trash and recycling**. Funding from the Regional Solid Waste Grants Program was used to send direct marketing mailers to residents to promote the grand opening of the **no-cost drop-off center**.



Lower Rio Grande Valley Development Council

Pg. 40

Regional Solid Waste Grants Program funds helped the City of Alton to build their recycling center and expand their services throughout the community. This **recycling trailer** is placed inside subdivisions throughout the city for one week at a time to collect recyclables.





North Central Texas Council of Governments

As of September 2016, the City of Grand Prairie has diverted **over 14,500 tons of concrete, saving more than \$450,000 in avoided disposal costs.** The City processes concrete into flex-base material, with the remainder being used to fortify the perimeter road at the landfill.

South Plains Association of Governments

Pg. 56



The City of Levelland added **960 square feet to their recycling facility** using Regional Solid Waste Grants Program funds. Since 2007, the City has received \$103,712.02 in grant funding to the facility. With the growth Levelland has experienced, the expansion will allow the City to bring in larger amounts of recyclables, thus reducing the amount going into the landfill.



West Central Texas Council of Governments

Pg. 62

In Fiscal Years 2014/2015, the West Central Texas Environmental Partnership was highly successful in its goal of reducing members' municipal solid waste recycling streams by alleviating **571.81 tons of cardboard, 10.31 tons of paper, 160 pounds of aluminum, 72 tons of metal and 4.89 tons of plastic.**

Regional Solid Waste Grants Program Funding Report Fiscal Years 2014/2015

Kimberly Lile
Texas Association of Regional Councils
klile@txregionalcouncil.org
www.txregionalcouncil.org